



hamlyn
smith.

Furners Mead, Henfield, BN5 9JA

£495,000

hamlyn smith.



2 Bedrooms



1 Reception



1 Bathroom

A wonderful detached bungalow with two bedrooms, a light and spacious living room, gorgeous gardens, a driveway and a garage.

- Detached two bedroom bungalow
- Moments from High Street
- Driveway and garage
- Manageable private gardens
- Some modernisation required
- No onward chain
- EPC D
- Council Tax E







📍 50 Goldstone Villas, Hove, BN3 3RS

☎ 01273 762222

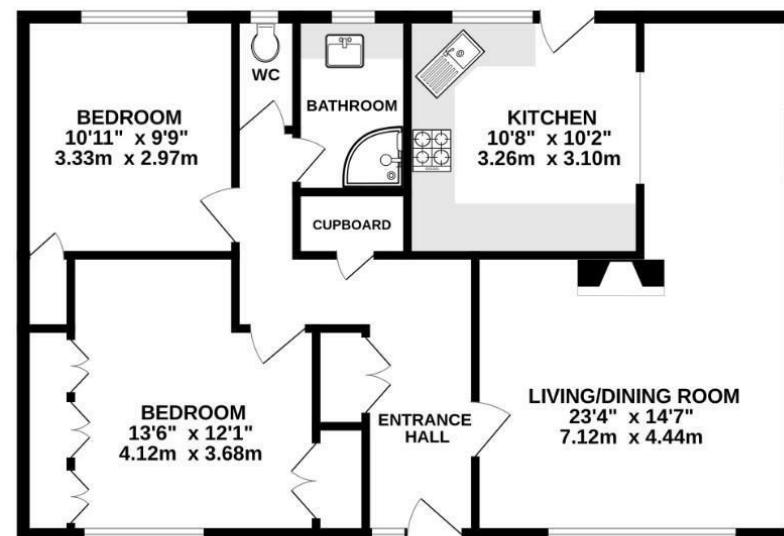
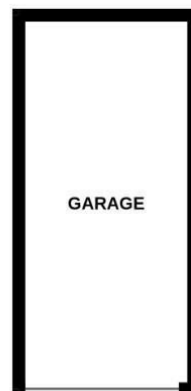
✉ hello@hamlynsmith.co.uk

Hamlyn Smith are delighted to bring to market this two-bedroom, detached property with a garage and off-street parking, on the highly desirable Furners Mead, which is moments from Henfield high street. This house has much to endear it to buyers, but its crowning glory is the beautiful garden with summer house, that has been lovingly planted and cared for, with a variety of shrubs and perennials that provide interest through a long season.

The house is set back from the road behind a large and attractive front garden. There is a driveway and garage to one side, and the front entrance is in the centre of the house, opening to a wide entrance hall, with wooden floors. A convenient and roomy cupboard for coats and shoes is on your left, and to your right, is the living room which has an enormous picture window with an outlook onto the lawned front garden. This room extends the full depth of the house and at the rear is a dining area, which has a window to the side of the house and which in turn is adjacent to the kitchen. Wooden floors extend through from the hallway into the living and dining areas. The kitchen is a great size with loads of cupboards and counter space. Appliances include an eye-level Neff double-oven with grill and a Neff gas hob. There is also space for a washing machine, and a full-height fridge freezer. The kitchen looks out onto the beautiful garden.

The bedrooms are on the other side of the house and are both generous doubles with built-in wardrobes. There is a good size shower room, with a large shower cubicle and a handbasin set in a vanity unit and the WC is separate in the adjacent room. The house has a Worcester boiler, which is located in a cupboard off the hallway and is double-glazed throughout.

Henfield High Street, has a wide variety of local shops, pubs and cafés, as well as a library, a post office and medical centre. There are exceptional opportunities for walking in the local area, on the Downs Link path either towards Shoreham and the coast, or inland to Guildford. Just over a mile to the north, Sussex Prairie Garden is an eight acre naturalistic garden, open to the public, which also runs creative courses, and holds musical events and markets.



TOTAL FLOOR AREA : 970 sq.ft. (90.1 sq.m.) approx.

Whilst every attempt has been made to ensure the accuracy of the floorplan contained here, measurements of doors, windows, rooms and any other items are approximate and no responsibility is taken for any error, omission or mis-statement. This plan is for illustrative purposes only and should be used as such by any prospective purchaser. The services, systems and appliances shown have not been tested and no guarantee as to their operability or efficiency can be given.
Made with Metropix ©2024

